

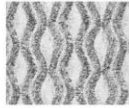
Templefurniture

Conversion Grade Sheet

Parkersouthern

Simply determine the grade conversion below, then refer to your price list to determine your cost.

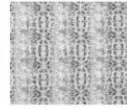
Fabric:
Parker
Southern



Frame:
Temple



Fabric:
Temple



Frame:
Parker
Southern



Parker Southern Grade:	Temple Conversion Grade to use:
1	1
2	1
3	2
4	2
5	3
6	3
7	4
8	4
9	5
10	6
15	7
20	10
25	13
30	16
35	19
40	22
45	25
50	28
55	30
60	33

LEATHER

L1	L3
L2	L5
L3	L7
L4	L9
L5	L11
L6	L13
L7	L15
L8	L20
L9	L25

Temple Grade:	Parker Southern Conversion Grade to use:
1	1
2	4
3	5
4	7
5	9
6	10
7	15
8	15
9	20
10	20
11	20
12	25
13	25
14	25
15	30
16	30
17	30
28	50
31	55

LEATHER

L1	L1
L2	L1
L3	L2
L4	L2
L5	L3
L6	L3
L7	L4
L8	L4
L14	L7
L15	L8

If a Parker Southern fabric converts to a Temple grade higher than 17 or a leather grade higher than L8, please contact customer service for pricing.

Pillow Trims:

Interchanging rope & fringe for either company is priced with the company that produces the trim. For example, if Parker Southern "Specialty" trims are used on Temple styles, then Parker Southern pricing is used to calculate the upcharge for that trim.

Revised: October 1, 2021