



*hand
knotted*

CHAPTER
← three →

Magical, colorful works of art for your floor, our hand knotted collections have a refinement, a specialness, which can only be created by hand. Every stage of this ancient craft is carried out by an artisan, from carding and spinning the wool to individually tying each knot.

ARABELLA

100% WOOL. REVERSIBLE. INDIA

Williamsburg

\$\$\$\$

Featuring a pattern inspired by an 18th century ogee design, these classic WILLIAMSBURG® soumaks are colored to suit the tastes of today's consumers. The soumak construction is time consuming to weave and results in a heavy, durable rug.

5' X 8'
7' X 9'
8' X 11'



225 spring green #1645



425 bluebell #1645

ASPEN

100% WOOL. INDIA

Hable

\$\$\$\$

“A rug can make a statement in a room while also making sense with your furniture and art collection...and your life. The more we looked around at the rugs we’d collected for our own homes, we realized that grays, taupes, clarets and indigos were ever-present. We applied this knowledge while designing this stunning collection. Both sophisticated and contemporary, the Aspen rug takes inspiration from nature and creates an elegant pattern for any room.” – The Hable Sisters, Kate and Susan

4' X 6' 8' X 11'
5' X 8' 9'6" X 13'6"
7' X 9'



475 midnight blue #1075



650 beige #1075



720 ash #1075



550 spice red #1075

HAND KNOTTED



650 beige #1075

ASPEN *continued*



STYLE TIP

A hand knot makes venturing out of the bath a pleasure.

BARRISTER 100% WOOL. INDIA

\$\$\$\$

Classically refined and hand knotted, Barrister lends a nod to the menswear look that's always handsome. A designer favorite.

2' X 3' 9' X 12' 2'6" X 8' RUNNER
 6' X 9' 10' X 14' 2'6" X 10' RUNNER
 8' X 10'



675 oyster #1085



475 ink #1085



775 cognac #1085

BILTMORE® CLASSICS

100% WOOL. INDIA

BILTMORE®

\$\$\$\$

Faithful reproductions from George Vanderbilt's personal antique rug collection bring the luxury of Biltmore® into your own home. Our Biltmore® Classics collection is hand knotted in a superior blend of woolen yarns.

2' X 3'
4' X 6'
6' X 9'

8' X 10'
9' X 12'
10' X 14'



FLORAL BIDJAR / **350** charcoal/rust #1798



KUBA / **700** beige/black #1797

BILTMORE® SELECT BIDJAR 100% WOOL. INDIA BILTMORE®

\$\$\$\$

Based on an original antique rug selected for the Louis XV Suite in Biltmore®. Hand knotted of pure wool by skilled artisans in India, the vibrant color and pattern in this reproduction are faithful to the original.

2' X 3'	6' X 9'	9' X 12'
3' X 5'	8' X 10'	10' X 14'
4' X 6'		



450 regal blue #1773

behind the design

**EXPLORE THE ESTATE THAT
INSPIRED OUR CREATIONS.**





JUGGLER / 550 cotton candy #1688

STYLE TIP
*Layer on the luxe
with multiple
patterns for one
great look.*

RING LEADER / 400 water #1689

CAROUSEL 100% VISCOSE. INDIA

\$\$\$\$

Colorful saris worn by the women of India are upcycled to create “sari silk” rugs in the Carousel Collection. These hand knotted rugs have bold color and texture, making them the ideal floor covering for your unique style. Get on board for a fun and stylish look.

3'6" X 5'6" 8' X 10'
5' X 8' 9' X 12'



JUGGLER / 150 peanuts #1688



JUGGLER / 550 cotton candy #1688



RING LEADER / 400 water #1689



RING LEADER / 100 popcorn #1689



ACROBAT / **275** snow cone #1685



HIGH WIRE / **250** candy apple #1687



ACROBAT / **500** watermelon #1685



BIG TOP / **200** taffy #1686



ACROBAT / **120** lemonade #1685

EMINENCE

\$\$\$\$

100% WOOL. INDIA

Traditional beauty showcased in three captivating colorways—our Eminence hand knot reigns supreme in all its regal glory.

4' X 6' 8' X 11'
 5' X 8' 9'6" X 13'6"
 7' X 9'



775 chocolate #1089



610 ivory #1089



525 red #1089



TEXTURE DETAIL

ETHEREAL

100% WOOL. INDIA

\$\$\$\$

Intricate classic detail marries fashionable form to create the hand knotted Ethereal collection. The subtle all over pattern is easy to pair with many decorating styles. Easily updates contemporary to casual, eclectic settings.

2' X 3' 9' X 12'
6' X 9' 10' X 14'
8' X 10'



675 bamboo #1084



300 silverscreen #1084



750 sand #1084

HAND KNOTTED

*Artistry and luxury
at your feet.*

FENCE

100% SEMI-WORSTED NEW ZEALAND WOOL. INDIA

COCOCOZY

\$\$\$

A smart geometric style with plenty of California elegance. Hand carving adds dimension to your floors. Hand knotted using an Indo-Tibetan weave.

5' X 8'
7' X 9'

8' X 11'
9' X 13'



650 natural linen #1928



400 light blue/ivory #1928



330 charcoal #1928



475 navy/ivory #1928

INFINITY

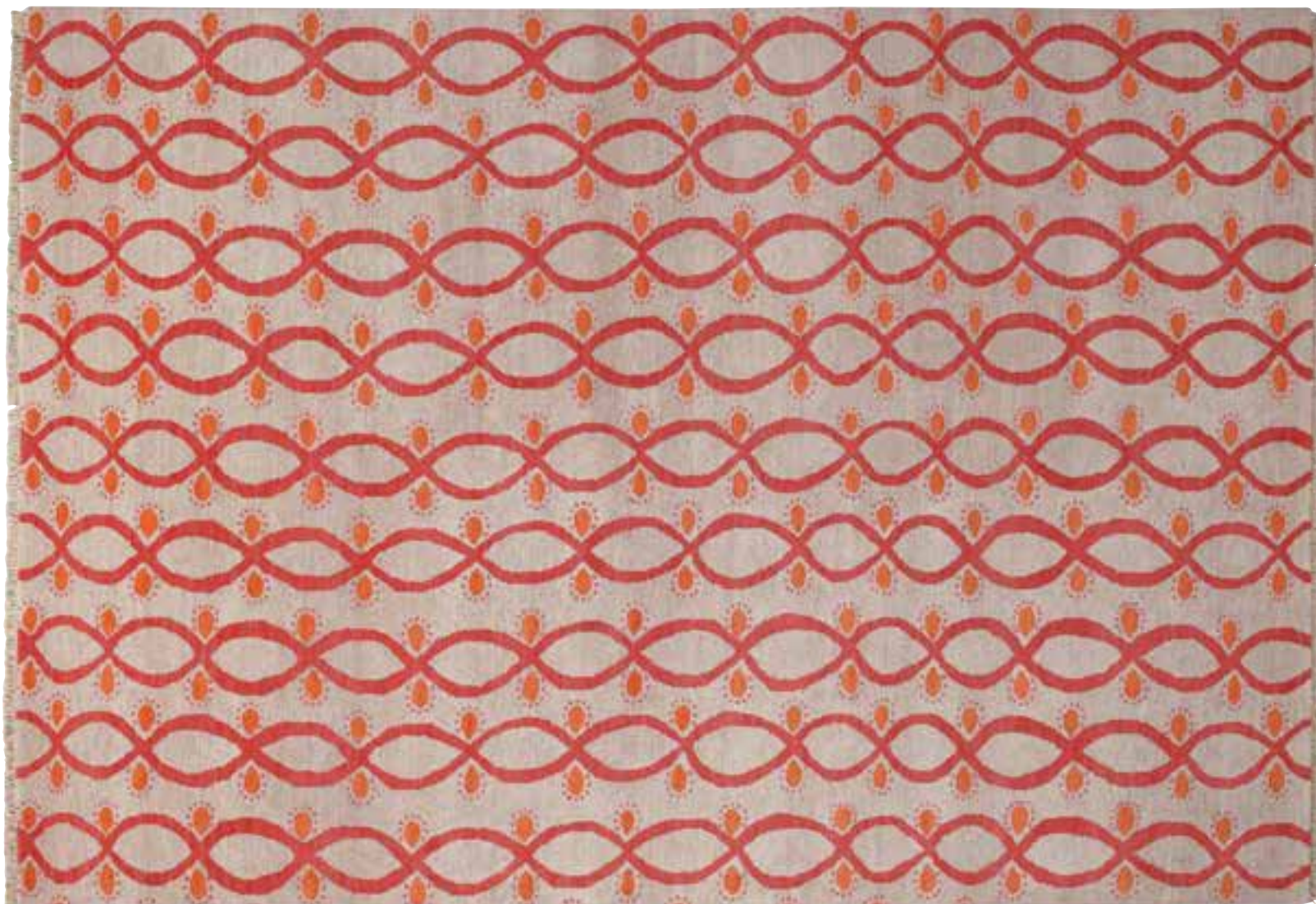
100% WOOL. INDIA

Hable

\$\$\$\$

“There’s just something about the perfect rug that can really ground a sense of place in your home. Taking its cue from the infinity sign, which dates back to the Roman era, we envision this rug as a part of your décor that inspires togetherness and community. A conversation starter and available in blues and pinks as well as neutrals, this collection is one of our faves! We especially love how the natural, hand-drawn look of the links translated so perfectly.” – The Hable Sisters, Kate and Susan

4' X 6' 8' X 11'
5' X 8' 9'6" X 13'6"
7' X 9'



650 bisque #1076



725 linen #1076



300 charcoal #1076



400 steel blue #1076



*Bold new textures inspired
by Northern Africa.*

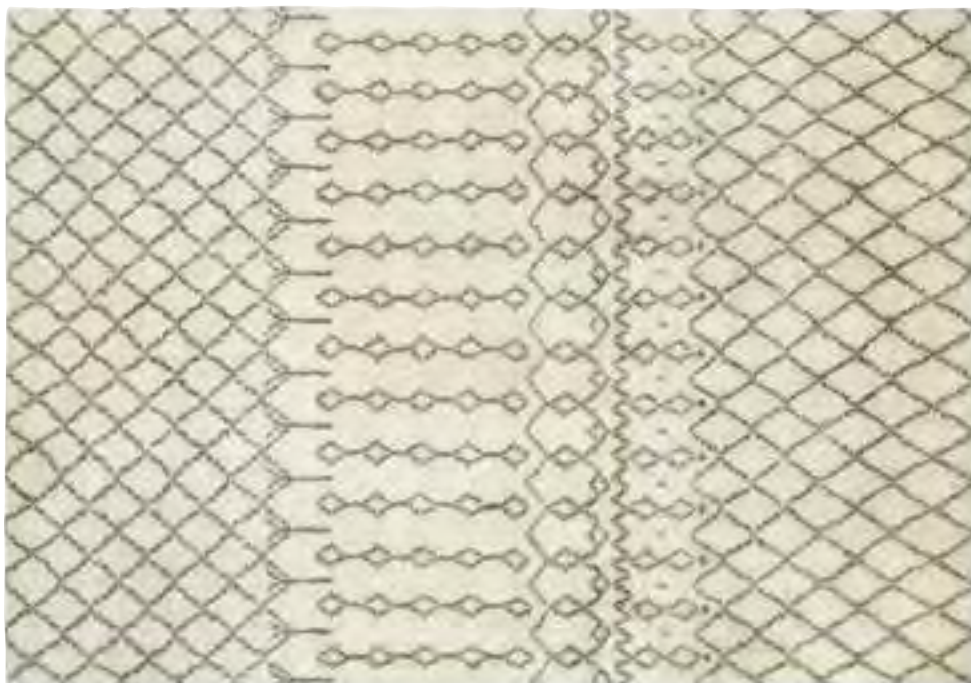
KASBAH

\$\$\$\$

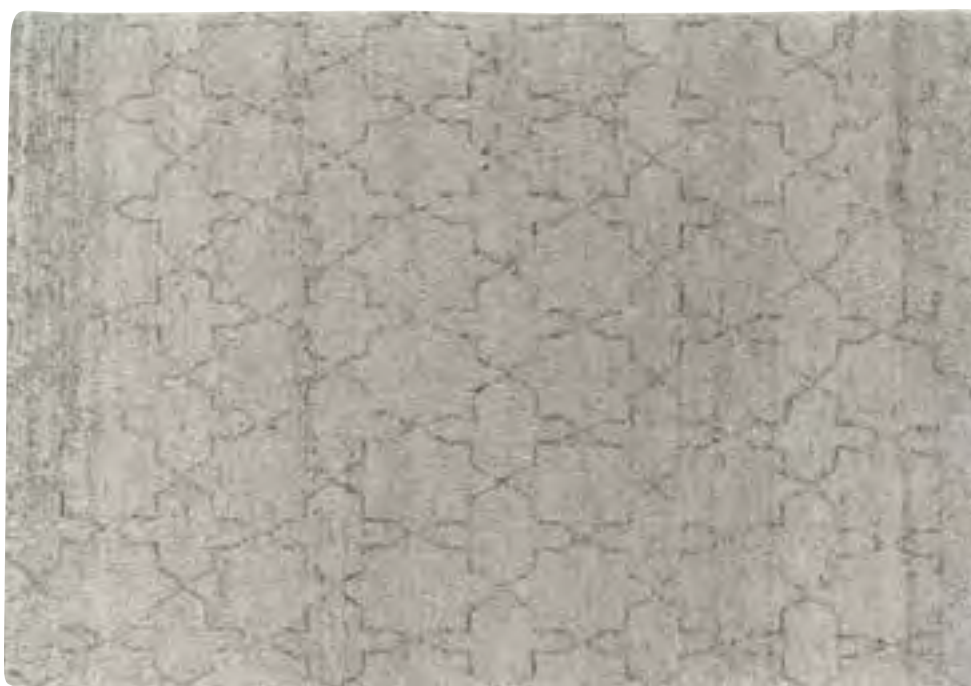
100% LINCOLN WOOL. INDIA

Tribal-inspired, our ultra-plush Kasbah collection is hand knotted from special English wool with a high hand for luxurious comfort underfoot. These primitive handmade designs are perfect for layering on flat weaves for a fresh, designer look.

3' X 5' 7' X 9'
5' X 8' 8' X 11'



TRELLIS / 675 ivory #1916



STAR / 650 natural #1925



MARRAKESH / 600 cream #1915



DIAMOND / 444 aqua #1924



CUBE / 750 brown #1926

LAUREL

100% WOOL. INDIA

Hable

\$\$\$\$

"A necklace found in a vintage shop in Atlanta inspired this interlocking pattern. Utilizing a fun combination of organic shapes and geometry, our Laurel rug is neutral enough to complement any décor. Look closely and you'll see the incredible amount of detail that goes into each chain. What can we say? They're absolutely stunning!" - The Hable Sisters, Kate and Susan

4' X 6' 8' X 11'
5' X 8' 9'6" X 13'6"
7' X 9'



675 wheat #1077



700 taupe #1077

LEGACY

100% WOOL. INDIA

BILTMORE®

\$\$\$\$

The inspiration for the Legacy collection is the multitude of handmade rugs on display at Biltmore® House in Asheville, NC. Pulling from those traditional elements, Capel has created a striking group of hand knotted rugs. The collection's Persian flavor is uniquely played out in a variety of colors.

3'6" X 5'6"

8'6" X 11'6"

5'6" X 8'6"

10' X 14'

7'6" X 9'6"

2'6" X 9' RUNNER



SHIRAZ / 575 classic red #1903



GABBEH / 555 red multi #1901



KESHAN / **450** blue/red #1902



SHIRAZ / **330** silver grey #1903

HAND KNOTTED



LODI GARDEN

100% WOOL. INDIA

\$\$\$\$

Add instant elegance to your home with these stunning Persian designs. Lodi Garden is the perfect blend of tradition and quality.

2' X 3'	6' X 9'	9' X 12'
3' X 5'	8' X 10'	10' X 14'
4' X 6'		



MAHAL / 200 sage/beige #1774



MAHAL / 425 blue/beige #1774



TABRIZ / 850 terra cotta #1777



MAHAL / 350 black/gold #1774

LOOP

100% SEMI-WORSTED NEW ZEALAND WOOL. INDIA

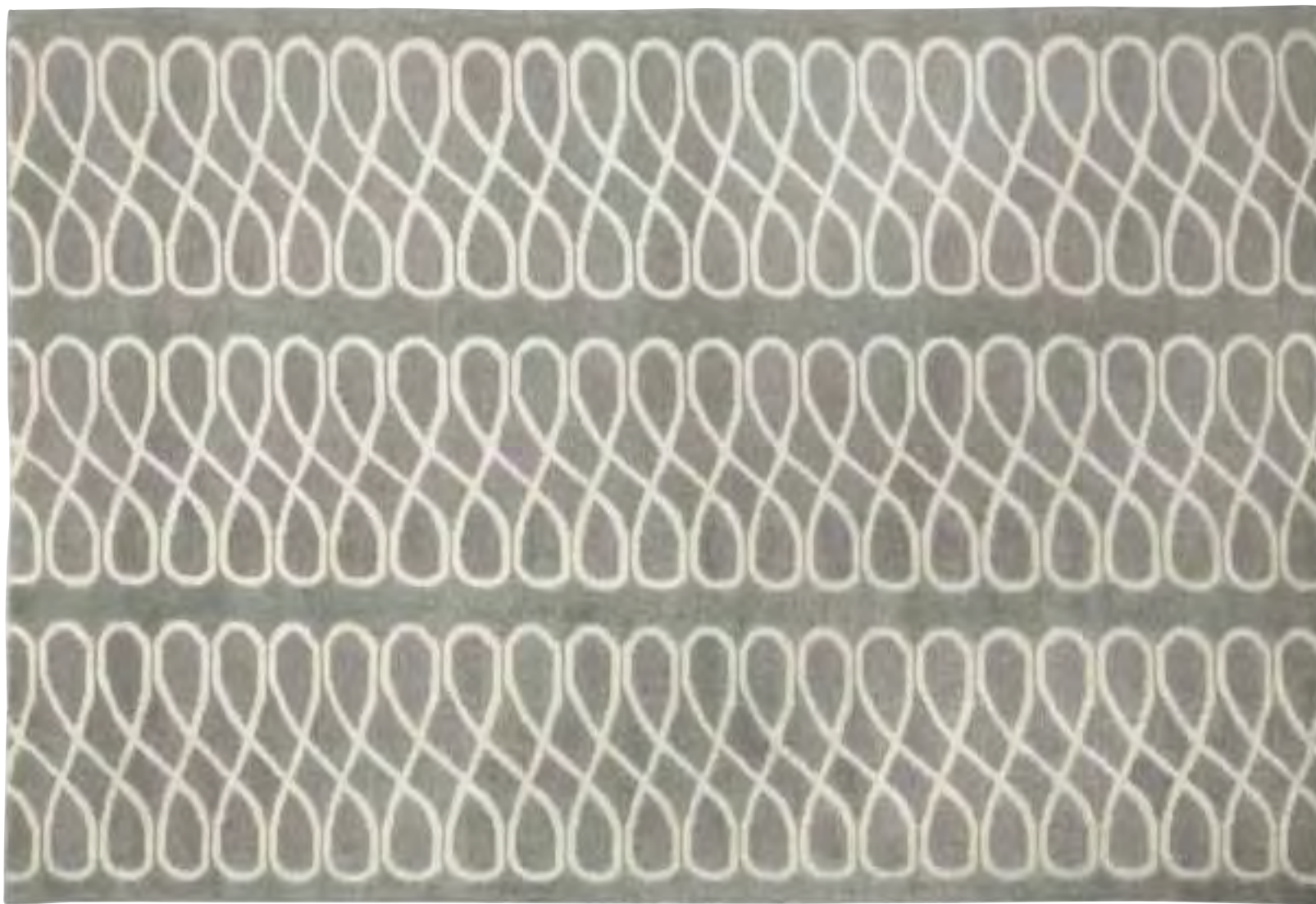
COCOCOZY

\$\$\$\$

Looping in and out and back again, this intricate hand knotted pattern is Coco's chic twist on the infinity sign. Rendered in playful tones, it's a graphic pattern we think you'll love through eternity. Hand knotted using an Indo-Tibetan weave and subtle hand carving.

5' X 8'
7' X 9'

8' X 11'
9' X 13'



360 gray/ivory #1929



400 light blue #1929



525 pink/ivory #1929

LOTUS

100% NEW ZEALAND WOOL. INDIA

Williamsburg

\$\$\$\$

Dramatic and elegant damask recalls the days of colonial Williamsburg, but a sense of modern color and style makes this beautifully bold interpretation perfect for today's home. Each rug is finely hand knotted and etched by hand for added detail.

2' X 3' 8' X 11'
5' X 8' 9'6" X 13'6"
7' X 9'



450 ocean #1772

TEXTURE DETAIL



behind the design

FOLLOW THE TRENDS AND TRADITIONS.



Scan the code to follow
the WILLIAMSBURG®
brand on Pinterest.

LYRICAL

100% SEMI-WORSTED NEW ZEALAND WOOL. INDIA

COCOCOZY


\$\$\$\$

A unique trellis pattern sets the Lyrical collection apart from the rest. COCOCOZY designed it and describes it this way: *"The latest introductions are mainly about color inspiration. I imagine a cool grey rug in a family living room and a rich blue rug in the den...mixing and matching these two colors in one home is the ultimate chic to me."*

5' X 8'
7' X 9'8' X 11'
9' X 13'

220 silver green #1932



330 grey #1932



400 cornflower blue #1932



440 indigo blue #1932

MAROC

100% SEMI-WORSTED NEW ZEALAND WOOL. INDIA

COCOCOZY 

\$\$\$\$

The look of our bold and vibrant Maroc rug was created by COCOCOZY exclusively for Capel. Coco says in her blog: *"I love that blue can either be mysterious and intriguing or peaceful and serene."* It's a hand knotted rug that features a twisted wreath design in a deep sea of cool, inviting blue.

5' X 8'
7' X 9'

8' X 11'
9' X 13'



475 dark blue #1933

behind the design

**COCO'S DESIGN BLOG
STARTED IT ALL.**



Scan to explore the
COCOCOZY blog.



OXFORD

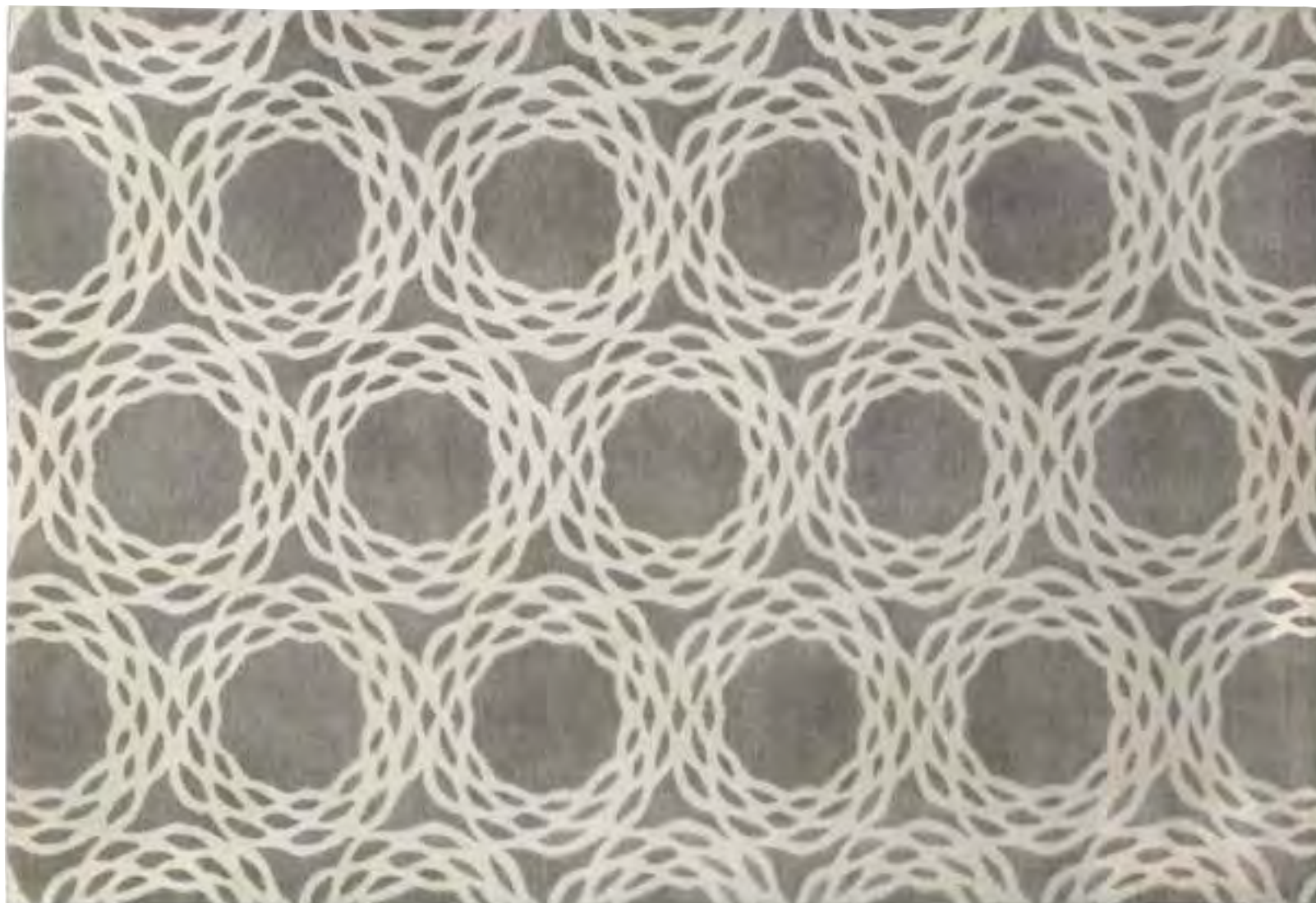
100% SEMI-WORSTED NEW ZEALAND WOOL. INDIA

COCOCOZY


\$\$\$\$

We absolutely love the large scale and the graphic look of the pattern in this collection from COCOCOZY. Layered circles create interesting visual texture. Hand knotted using an Indo-Tibetan weave.

5' X 8'	8' X 11'
7' X 9'	9' X 13'



360 gray/ivory #1930



650 natural linen #1930



220 seafoam/ivory #1930



475 navy #1930



STYLE TIP

Naturally stain-resistant, hand knotted wool runners are a natural fit for kitchens.

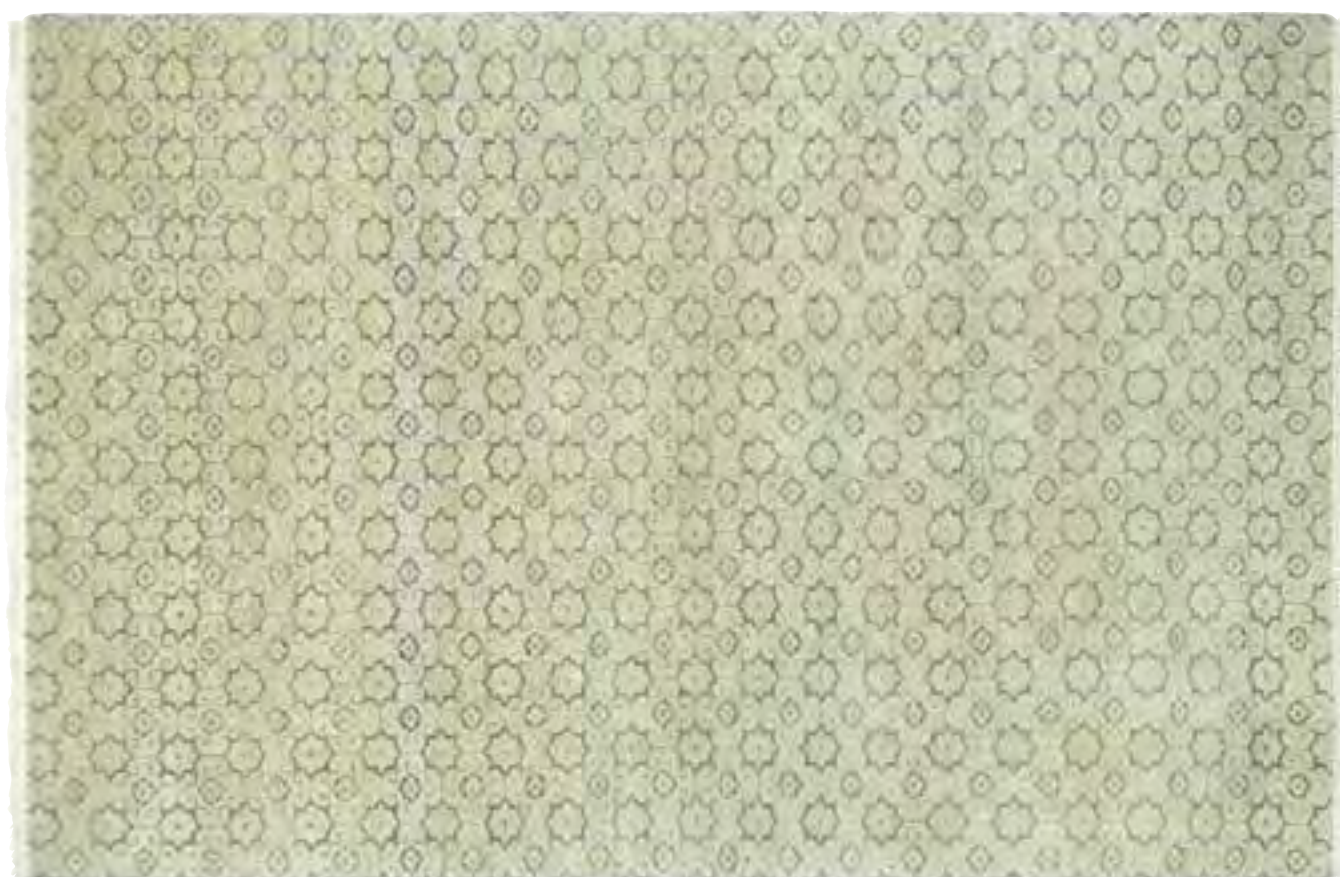
PARK LANE

100% NEW ZEALAND/ARGENTINE BLENDED WOOL. INDIA

\$\$\$\$

Hand knotted using blended wools, our Park Lane collection is a sophisticated take on age-old oushak motifs. Soft, silky colors add design and time-worn style to floors.

3'6" X 5'6"	8'6" X 11'6"
5'6" X 8'6"	10' X 14'
7'6" X 9'6"	2'6" X 8'6" RUNNER

**150** vintage gold #1910**700** vintage beige #1910



300 silver #1910



200 light aqua #1910



100 light gold #1910



225 sage #1910

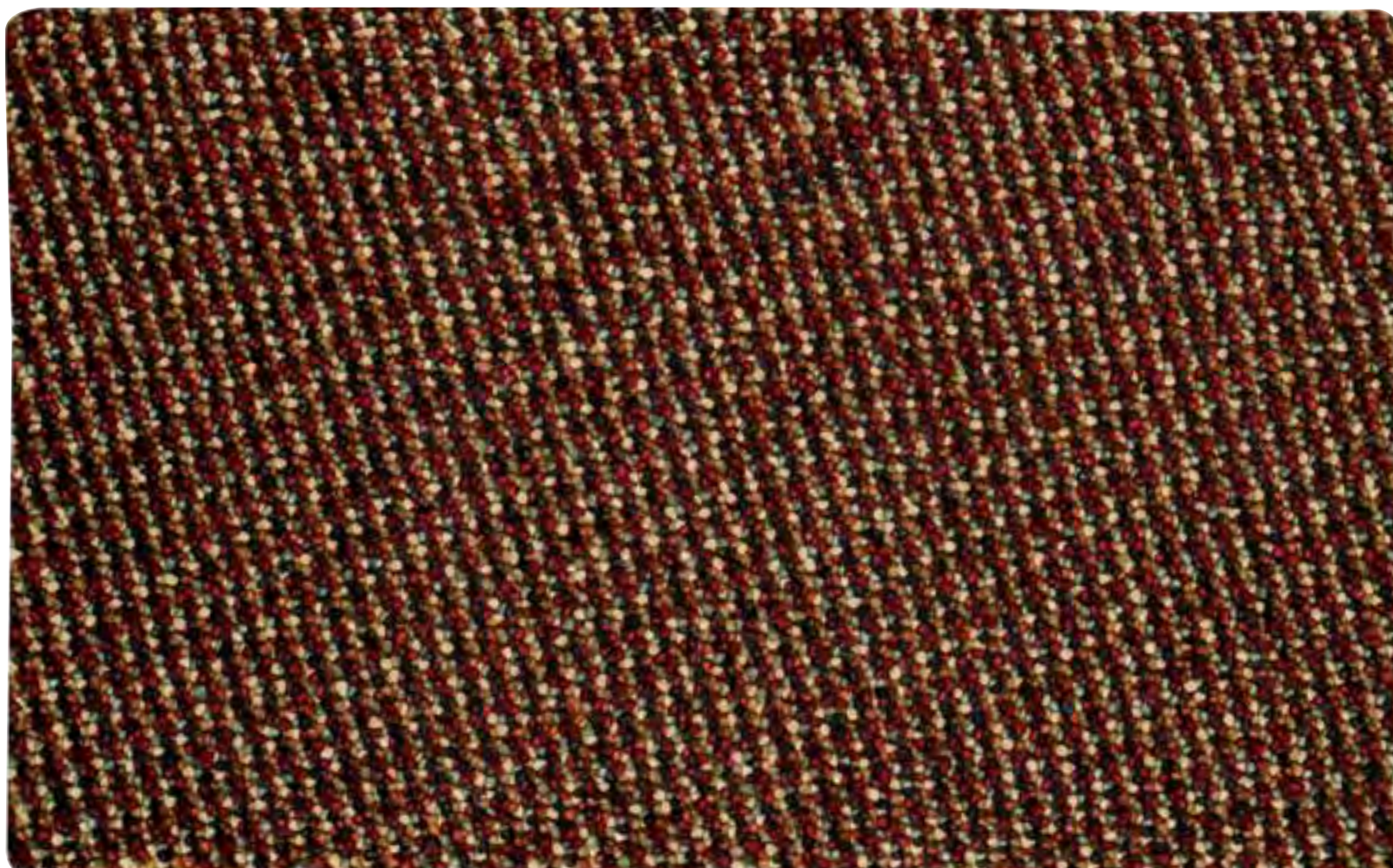
PEBBLES

100% NEW ZEALAND WOOL. INDIA

\$\$\$\$

Soft and plush underfoot with all the textural elements that you crave—Pebbles is a unique hand knotted rug with little felted pillows of wool in fashionable shades. A Capel favorite that adds an eclectic look to the stylish home.

2' X 3' 7' ROUND
 4' X 6' 7' X 9'
 5' X 8' 8' X 11'



575 cranberry #1921



600 oatmeal #1921

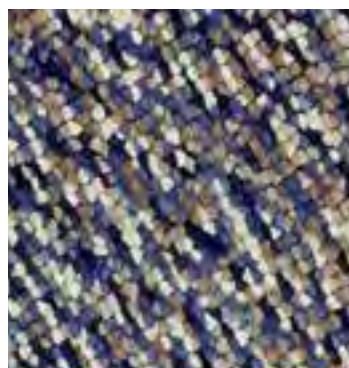


750 mink #1921

TEXTURE DETAIL



200 seaglass #1921



440 indigo #1921



950 gumballs #1921

PERSIAN TRACE

\$\$\$\$

100% WOOL. INDIA

Intricately hand knotted patterns give these tone-on-tone designs a sumptuous, rich presence. Made of pure, hard-twisted wool, our Persian Trace rugs will bring an air of beauty and lasting distinction to your surroundings.

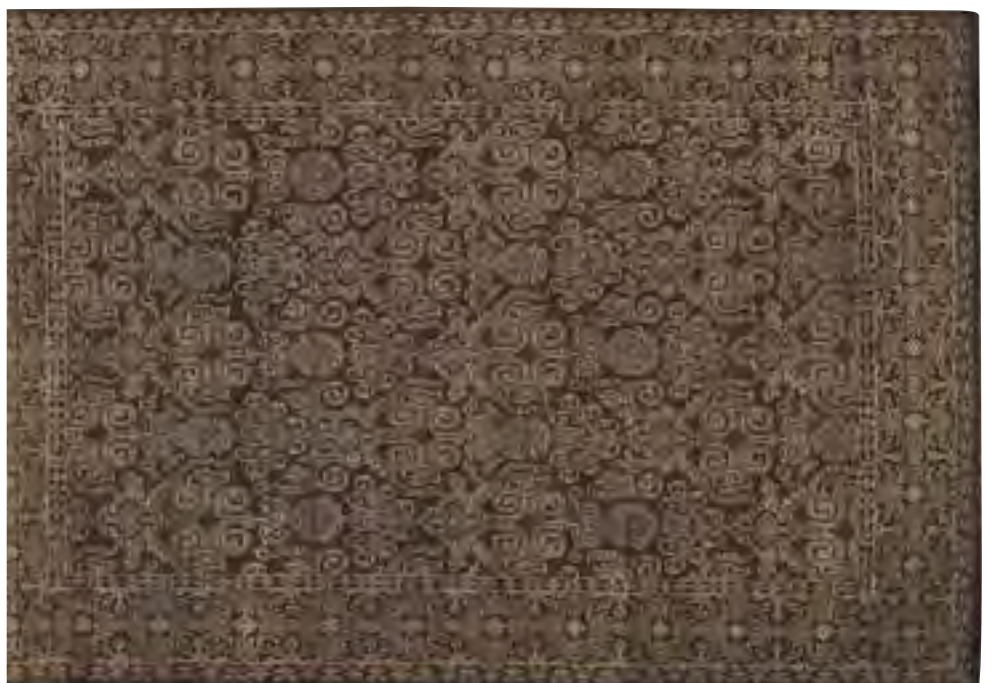
5'6" X 8'6" 8'6" X 11'6"
7'6" X 9'6" 9'6" X 13'6"



200 jade #1395



550 poppy #1395



775 chestnut #1395



TEXTURE DETAIL

PORTOFINO

100% NEW ZEALAND WOOL. INDIA



\$\$\$\$

Everything designer Kevin O'Brien loves about the coast of Italy, knotted using an Indo-Tibetan weave. Subway tile patterns mimic layers of colors seen in the sky and sea. Features signature designer colors.

5' X 8'
7' X 9'
8' X 11'



440 blue/grey #1810



220 sage/mint #1810

QUATREFOIL

100% SEMI-WORSTED NEW ZEALAND WOOL. INDIA

COCOCOZY

\$\$\$\$

We love how universal this pattern is. Originally seen in Moroccan and Gothic style decorating, Coco's version of a four-leaf clover design is modern, sophisticated and plays well with a myriad of styles. Hand knotted using an Indo-Tibetan weave.

5' X 8' 8' X 11'
7' X 9' 9' X 13'



360 gray/ivory #1931



650 natural linen #1931



275 apple/ivory #1931



400 light blue/ivory #1931



450 peacock #1931

HAND KNOTTED



RING

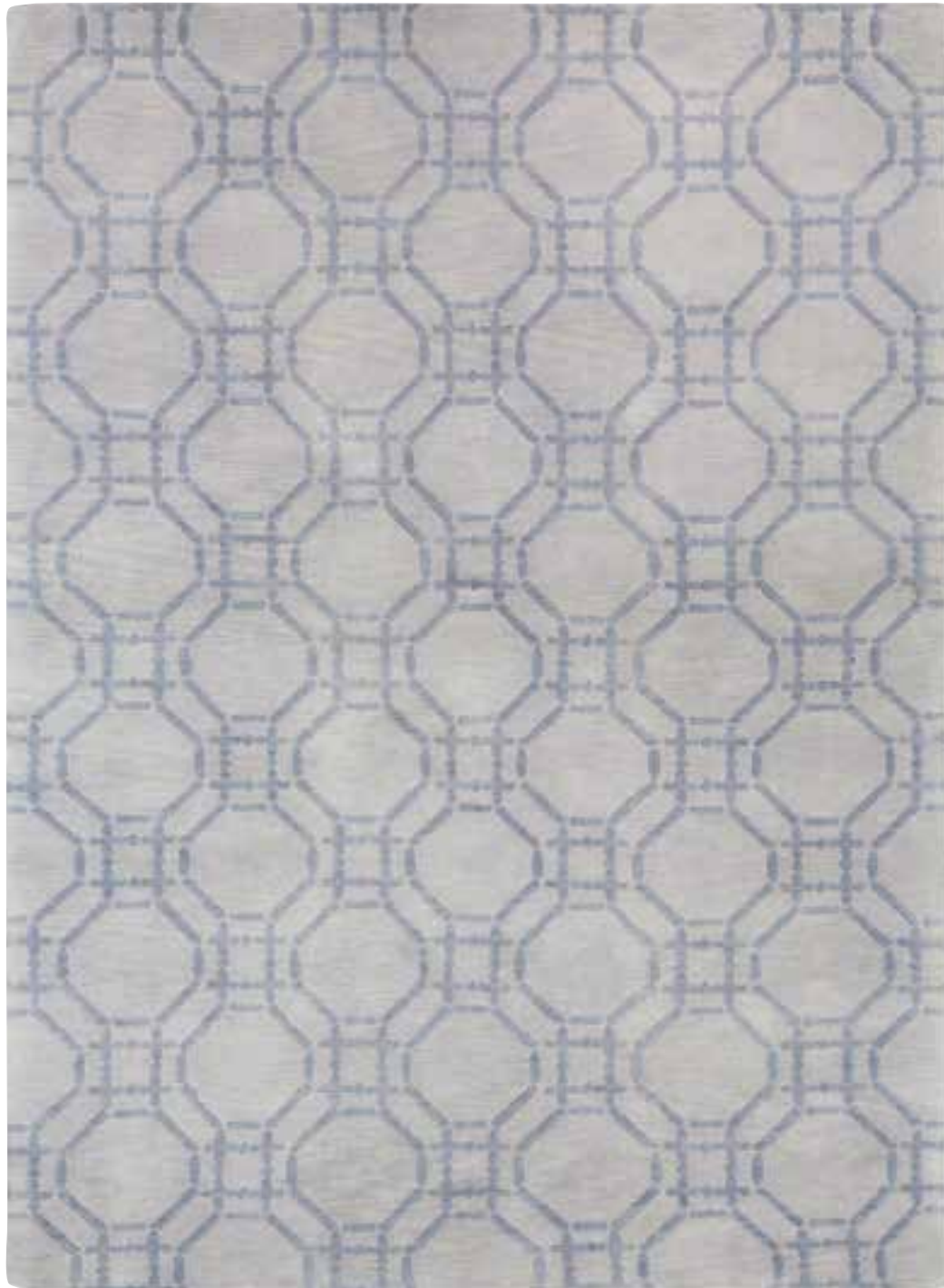
100% SEMI-WORSTED NEW ZEALAND WOOL. INDIA

COCOCOZY 

\$\$\$\$

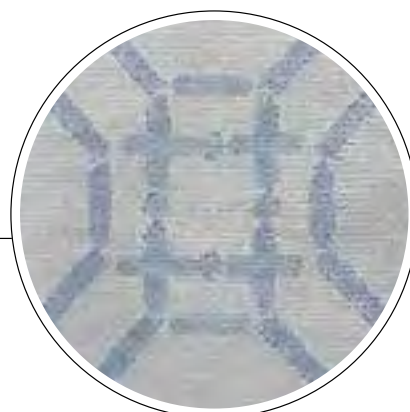
"I love using grey in moderation in home décor," says designer COCOCOZY. "I think grey symbolizes a wonderful neutral zone between black and white...a center ground...a color of balance." Our Ring rug has distinction and versatility. The offbeat trellis pattern weaves its way across this serene and silvery hand knotted rug.

5' X 8' 8' X 11'
7' X 9' 9' X 13'



300 grey #1934

TEXTURE DETAIL



HAND KNOTTED



MIRAGE / 950 multi #1702



MIRAGE / 950 multi #1702

VINTAGE

\$\$\$\$

100% WOOL. INDIA

Capel's Vintage collection of "zero-pile" rugs are hand knotted in India of the finest wool. They are sheared low to bring an aged patina to the surface. The antique distressing adds to its Old World appeal. The Vintage collection is distinctive and works well with modern styles and themes.

3'6" X 5'6"
5' X 8'

8' X 10'
9' X 12'



LAKE TAHOE / 800 rustic canyon #0030 / P. 44



OAK / 550 red #1704



SUNSET / 530 pink grey #1703



MANDALA / 550 red #1700



BASTILLE / 720 antique bronze #1701

YAZZIE

\$\$\$\$

100% WOOL. INDIA

When it comes to luxury and elegance, Yazzie is where it's at. These soft, indulgent Persian designs are double-washed to beautifully portray an antique finish true to its ancestors.

3'6" X 5'6" 8'6" X 11'6"
5'6" X 8'6" 10' X 14'
7'6" X 9'6"



175 champagne #1908



650 ivory/red #1908



300 light grey/ivory #1908



740 khaki/slate #1908



425 spa blue #1908

HAND KNOTTED



740 khaki/slate #1908

YAZZIE *continued*