

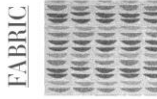
*** **FOR COPY PURPOSES ONLY** ***

Y

Templefurniture CONVERSION GRADE SHEET Parkersouthern

Simply determine the grade conversion below, then refer to your price list to determine your cost.

PARKER SOUTHERN



PARKER SOUTHERN GRADE	TEMPLE FURNITURE GRADE TO USE	PARKER SOUTHERN GRADE	TEMPLE FURNITURE GRADE TO USE
1	1	31	19
2	2	32	20
3	3	33	20
4	3	34	21
5	4	35	21
6	5	36	22
7	5	37	23
8	6	38	23
9	6	39	24
10	7	40	24
11	8	41	25
12	8	42	26
13	9	43	26
14	9	44	27
15	10	45	27
16	10	46	28
17	11	47	28
18	12	48	29
19	12	49	30
20	12	50	30
21	13	51	31
22	14	52	31
23	15	53	32
24	15	54	33
25	16	55	33
26	16	56	34
27	17	57	34
28	17	58	35
29	18	59	35
30	19	60	36

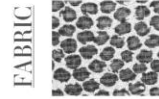
LEATHER

L1	L5
L2	L7
L3	L9
L4	L11
L5	L13
L6	L15
L7	L16
L8	L25
L9	L31
L10	L37

TEMPLE FURNITURE



TEMPLE FURNITURE



TEMPLE FURNITURE GRADE	PARKER SOUTHERN GRADE TO USE	TEMPLE FURNITURE GRADE	PARKER SOUTHERN GRADE TO USE
1	1	31	53
2	3	32	55
3	5	33	57
4	6	34	58
5	8	35	60
6	10	36	62
7	12	37	64
8	13	38	65
9	15	39	67
10	17	40	69
11	19	41	71
12	20	42	72
13	22	43	74
14	24	44	76
15	26	45	77
16	27		
17	29		
18	31		
19	32		
20	34		
21	36		
22	38		
23	39		
24	41		
25	43		
26	45		
27	46		
28	48		
29	50		
30	52		

LEATHER

L1	L1	L11	L5
L2	L1	L12	L6
L3	L1	L13	L6
L4	L2	L14	L7
L5	L2	L15	L8
L6	L3		
L7	L3		
L8	L4		
L9	L4		
L10	L5		

If a fabric conversion is not listed above, please contact customer service for pricing.

Please note the conversion of grades between different grading systems may not always be exact due to variations in grading scales. While every effort has been made to ensure accuracy, discrepancies may occur.

PILLOW TRIMS:

Interchanging rope & fringe for either company is priced with the company that produces the trim. For example, if Parker Southern "Specialty" trims are used on Temple styles, then Parker Southern pricing is used to calculate the upcharge for that trim.

REVISED: APRIL 2025