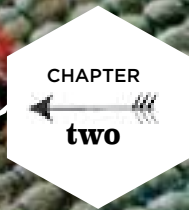




flat woven



Known for their amazing colors and patterns, our flat woven collections fit easily into any space—or under any door—with zero pile height. Generally reversible, they're a practical and affordable option for any room.

ARABESQUE GENEVIEVE GORDER \$\$\$\$

100% WOOL. REVERSIBLE. INDIA

"A classic tile pattern from the Middle East and North Africa, it's one of my go-to mosaics in flooring. Switching mediums and using it on a rug gives it new life." – Genevieve Gorder

3' X 5' 7' X 9'
5' X 8' 8' X 11'



300 oslo gray #3623



800 saffron #3623



350 pigeon #3623

behind the design

**MEET
THE REAL
GENEVIEVE.**



Scan the code to see what inspires Genevieve on her Real Genevieve blog.



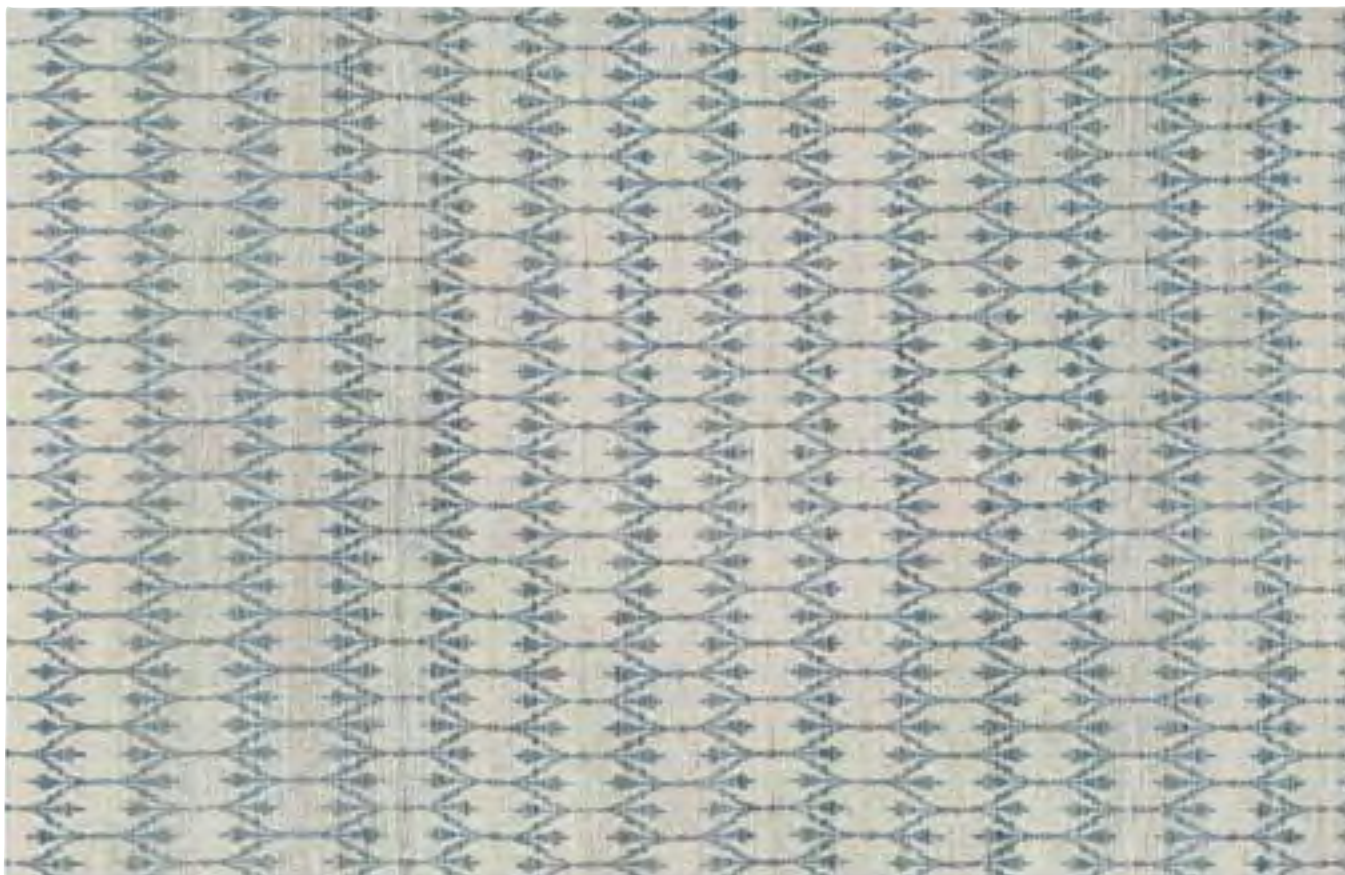
BERKELEY

60% WOOL, 40% VISCOSE. INDIA



Capel's Berkeley collection is made in India, combining wool and recycled sari silk yarns to produce a rug that is uniquely textured. Six distinctive designs each in their own colorway are available in a wide range of sizes, including runners. The low pile and soft feel make this rug fashionable as well as family-friendly. It will be a durable yet stylish addition to any space.

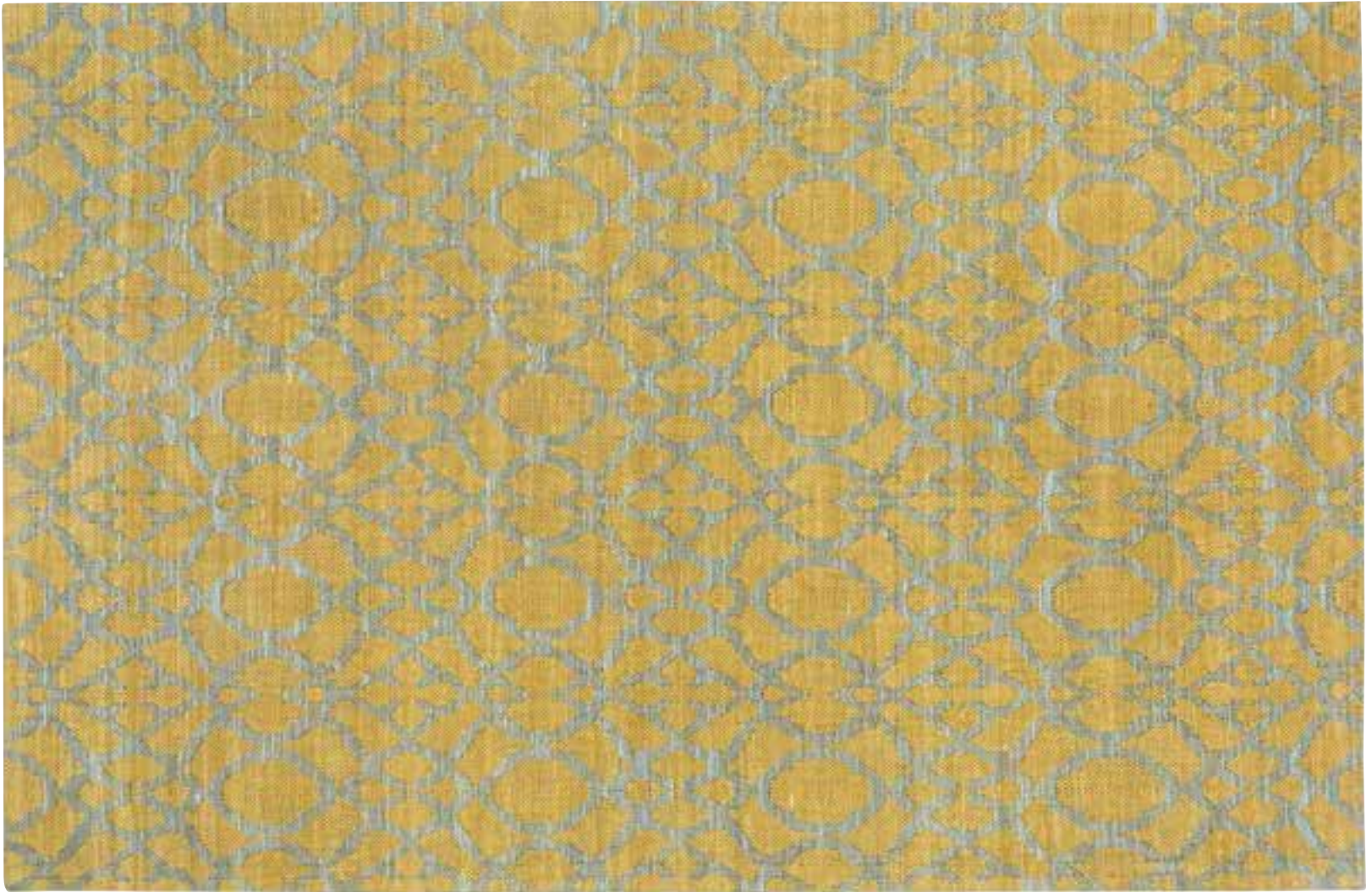
3' X 5'
5' X 8'
7' X 9'
8' X 11'
2' X 8' RUNNER



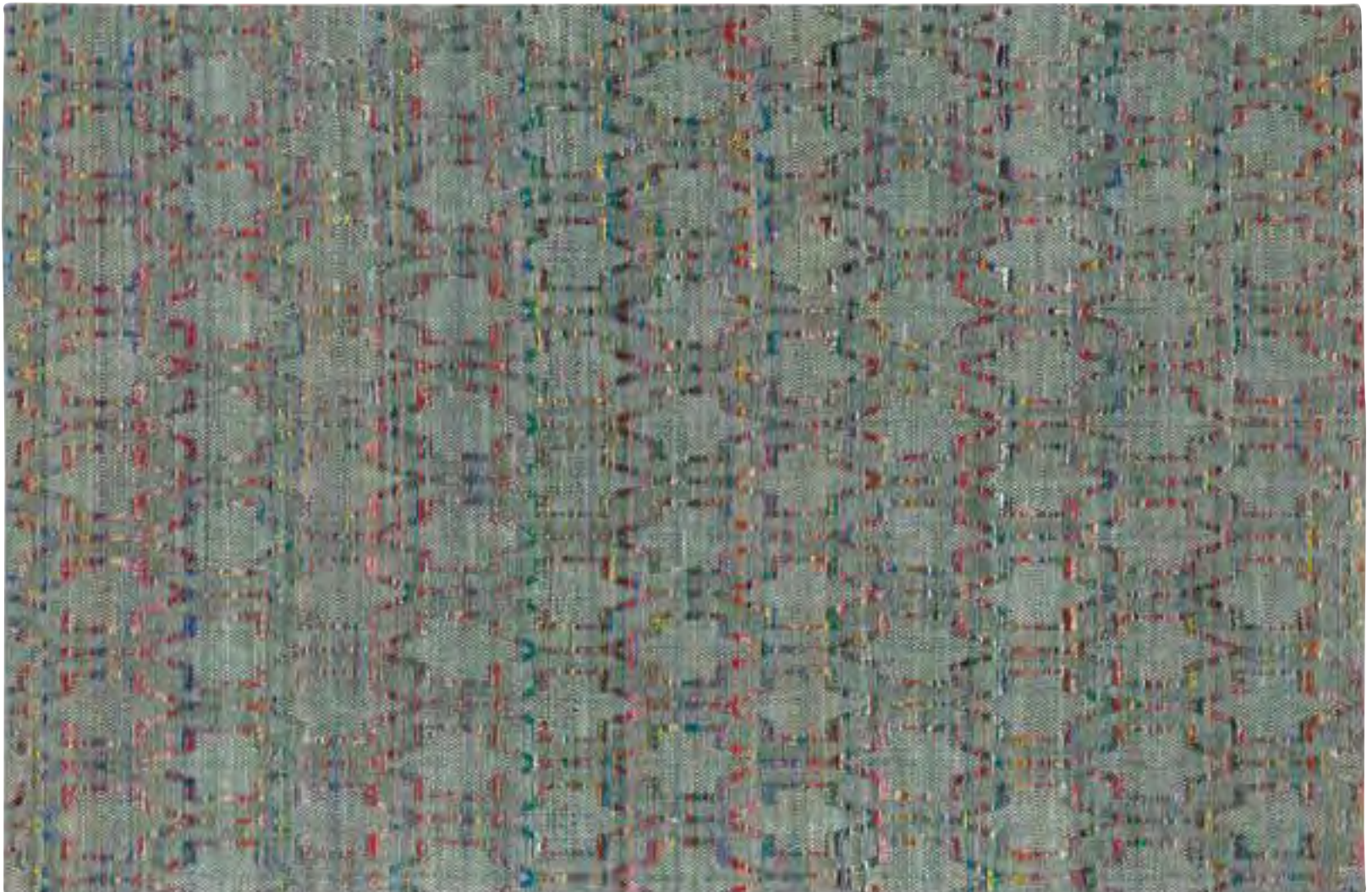
640 glacier #3670



700 mushroom #3670



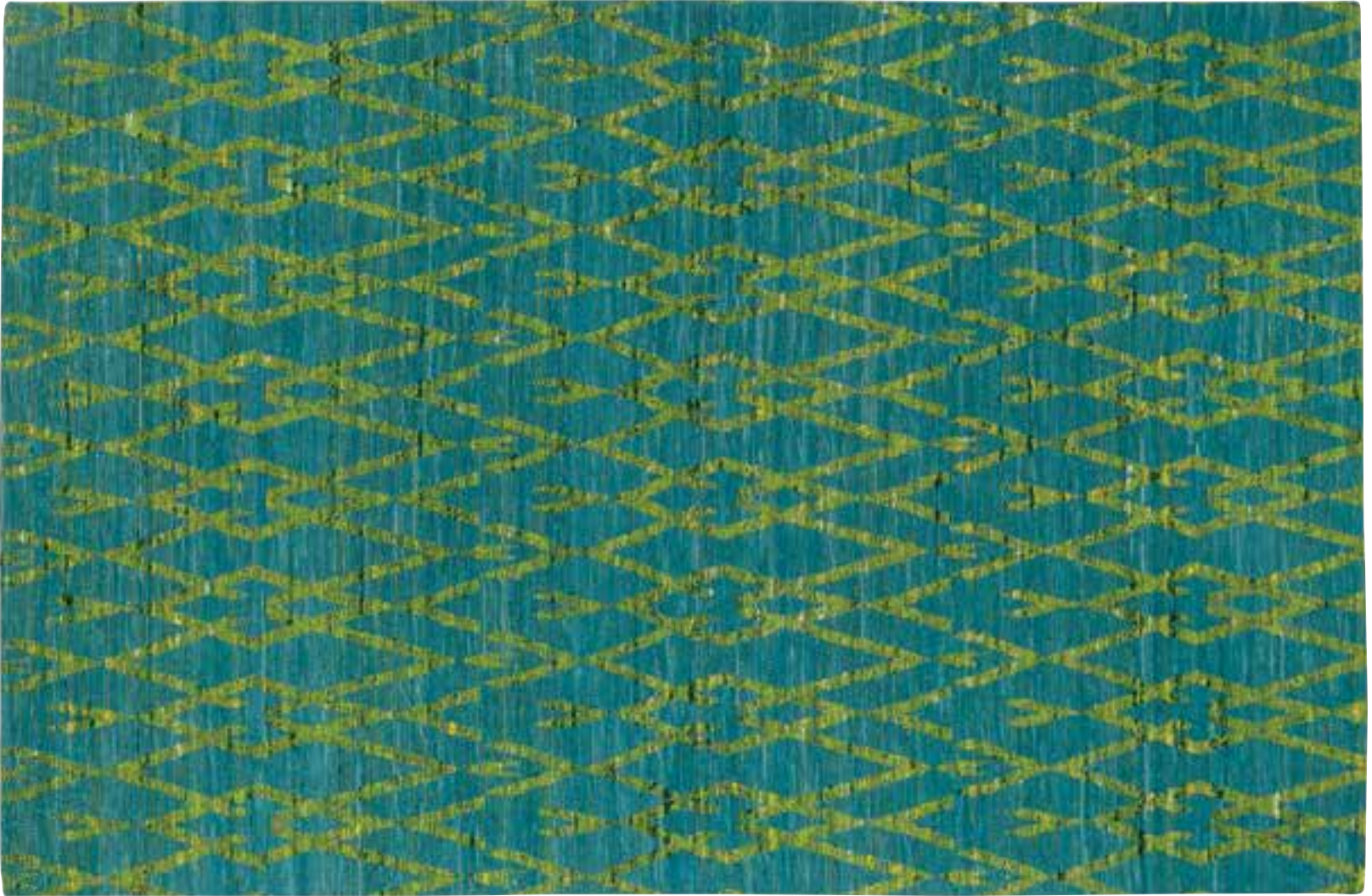
150 butterscotch #3670



300 storm #3670

FLAT WOVEN





440 deep sea #3670



775 granite #3670

CHEVRON

55% JUTE, 45% COTTON. REVERSIBLE. INDIA

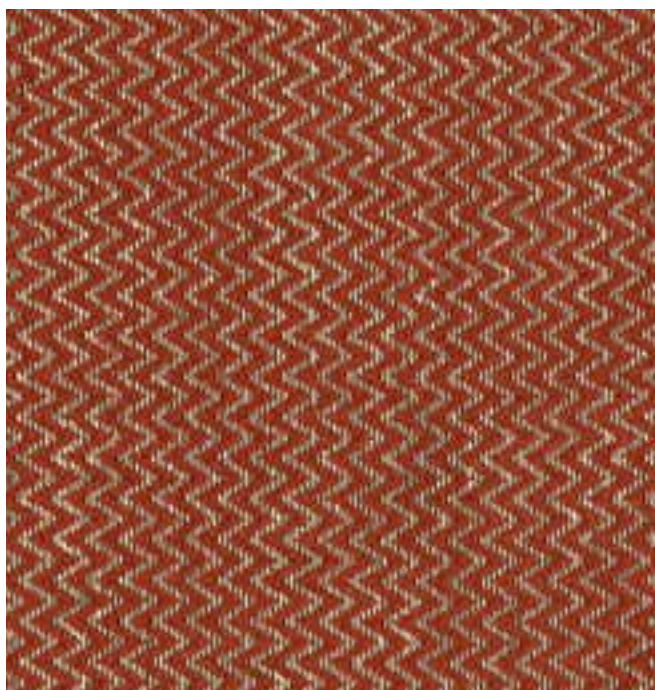


Chevron is handwoven from natural cotton and jute. Completely reversible and comfortable underfoot, it is at home in casual settings.

2' X 3' 8' X 10'
 3' X 5' 9' X 12'
 5' X 8' 2'6" X 8' RUNNER



650 linen #6510



850 canyon #6510



450 indigo #6510



RUGS PICTURED TOP TO BOTTOM / COLOR HARMONY 700 desert #0406, COLOR HARMONY 420 sea breeze blue #0406, COLOR HARMONY 800 sunset #0406
BASKETS PICTURED TOP TO BOTTOM / LAKE TAHOE 700 woodland tan #0030, LAKE TAHOE 800 rustic canyon #0030, LAKE TAHOE 480 taos blue #0030 / P. 44-45

COLOR HARMONY

34% WOOL, 33% NYLON, 33% POLYESTER. REVERSIBLE. USA

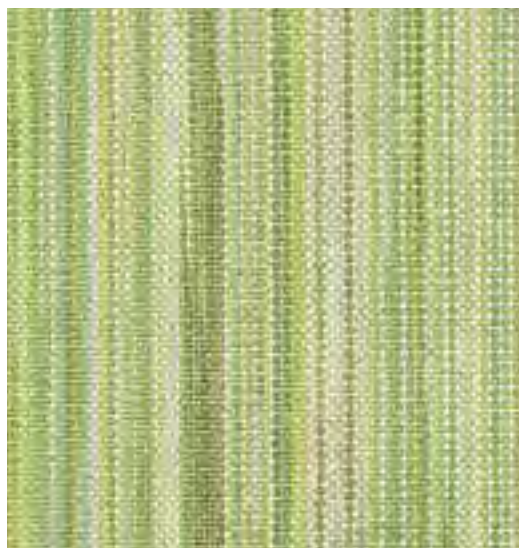


Trending bold and vivid colors come alive in our new tonal woven collection made in our North Carolina mills. Made with hypo-allergenic wool, this collection is a bright, yet simple way to create a monochromatic pop of color. Incredibly light and easy to clean, it's a go-to classic for any room.

2' X 3' 7' X 9'
 3' X 5' 8' X 11'
 5' X 8' 2' X 8' RUNNER



700 desert #0406



225 moss #0406



310 twilight #0406



800 sunset #0406



480 orchid #0406



500 berry #0406



420 sea breeze blue #0406

pair with
 LAKE TAHOE →
 P. 44



DIAMOND

55% JUTE, 45% COTTON. REVERSIBLE. INDIA



Sister to our Chevron rug, this handwoven collection made from natural cotton and jute is reversible and comfortable underfoot.

2' X 3' 8' X 10'
3' X 5' 9' X 12'
5' X 8' 2'6" X 8' RUNNER



600 linen #6511



400 slate #6511



ANCIENT ARROW / 745 stone azure #3305 / P. 134-135

300 pigeon leo sun #3641



300 pigeon leo sun #3641

DOKKA STRIPE GENEVIEVE GORDER \$\$\$\$ 

100% WOOL. REVERSIBLE. INDIA

This rug was inspired by a vintage Norwegian sweater. Designer Genevieve Gorder sums it up this way: *“Striped and featuring one band of color pop in the center of the rug, we give the floor the jewelry it so needs.”* The Dokka Stripe lends a geometric and tribal feel to any room and has a distinctive look just right for your home.

3' X 5' 7' X 9'
5' X 8' 8' X 11'



130 leo sun pigeon #364



830 saffron kettle #3641



745 stone salmon #3641



350 kettle blush #3641

ESSEX 100% WOOL. REVERSIBLE. INDIA



Essex features a subtle goose-eye pattern for great textural appeal. It is reversible and woven of pure wool.

4' X 6' 7' X 9'
5' X 8' 8' X 11'



725 putty #9515

TEXTURE DETAIL



FLASH

100% WOOL. REVERSIBLE. INDIA



Our Flash rugs, with their subtle fade and smooth feel, anchor a room with sophisticated ombre style. Their flat woven construction is reversible for double wear.

3' X 5' 7' X 9'
5' X 8' 8' X 11'



330 haze #3634



450 indigo #3634



700 seagrass #0085

750 seagrass stripe #0085

GRASSY ISLAND

100% POLYPROPYLENE. REVERSIBLE. USA

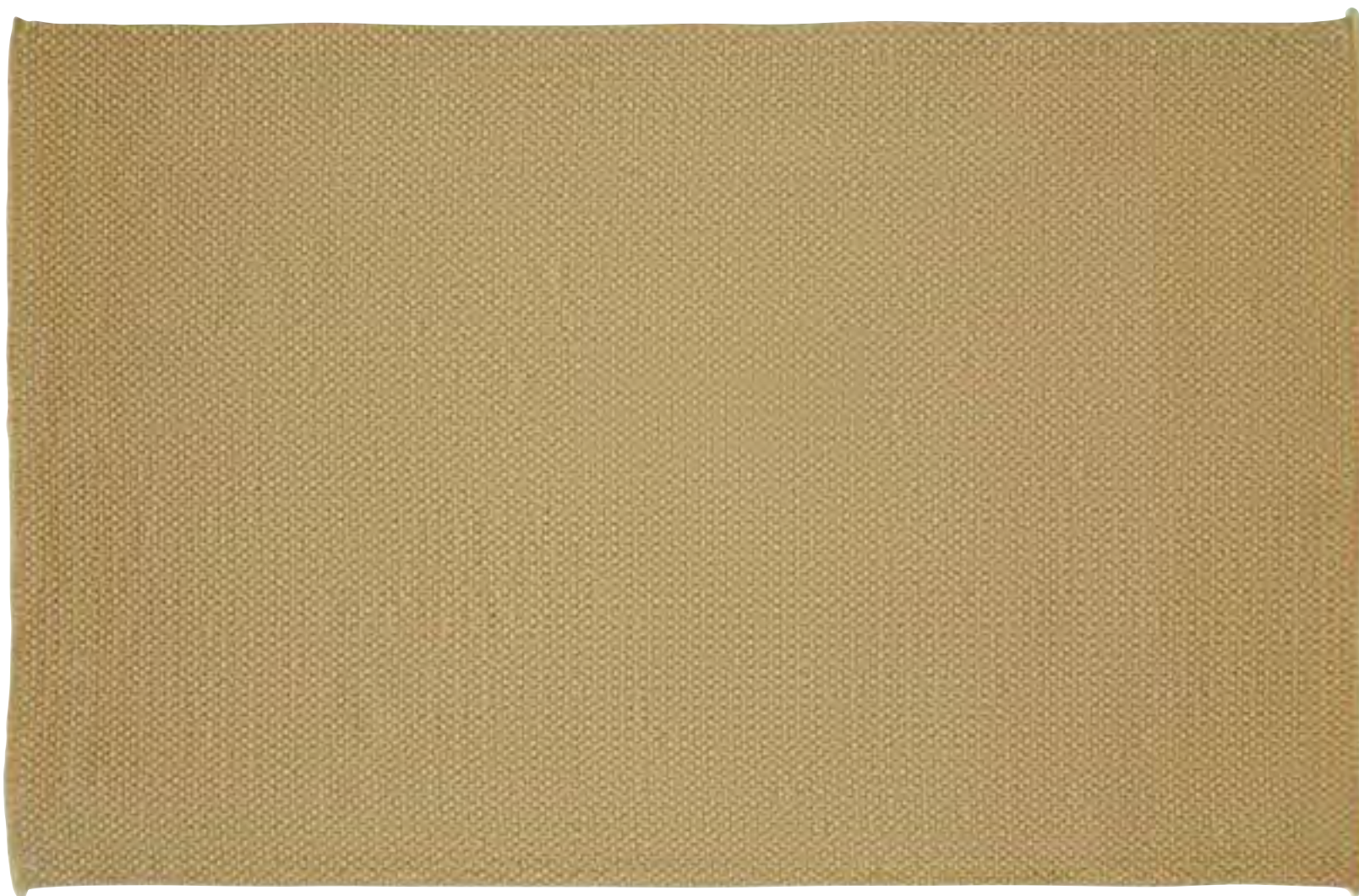


Our Grassy Island designs create a crisp canvas for indoor and outdoor spaces. Woven with easy-care fibers for durability and easy cleaning. Reversible for twice the wear.

- 2' X 3'
- 3' X 5'
- 5' X 8'
- 7' X 9'
- 8' X 11'
- 2' X 8' RUNNER



750 seagrass stripe #0085



700 seagrass #0085



HAMPTON

34% WOOL, 33% NYLON, 33% POLYESTER. REVERSIBLE. USA



Featuring a crisp basket weave texture in fashion-inspired hues, this collection is easy on the eyes and the feet. Handwoven from a resilient blend of wool and synthetic fibers. The wool's flexibility allows for years of use and added durability.

2' X 3' 7' X 9'
 3' X 5' 8' X 11'
 5' X 8' 2' X 8' RUNNER



700 dune #0404



310 ash #0404



400 denim #0404



760 shingle stripe #0404



360 ash stripe #0404



460 denim stripe #0404



425 seaglass blue #0404



100 goldenrod #0404



910 madras #0404



725 flagstone #0404



430 blue multi #0404



950 beach party #0404



700 barley #6505



700 barley #6505

KARMA NATURALS LOOP



100% JUTE. INDIA

Eco-friendly fabulous! Artisans handcraft this rug from fast-growing renewable fibers in chic yet rustic weaves.

2' X 3' 7' X 9'
 4' X 6' 8' X 11'
 5' X 8'



LARIAT 80% LEATHER, 20% COTTON. REVERSIBLE. INDIA



The natural hues and supple textures of leather elevate this traditional rag-style rug to a sophisticated design element for the home. Crafted from reclaimed leather and natural cotton, Lariat is entry-level leather at a great price.

3' X 5' 7' X 9'
 4' X 6' 8' X 11'
 5' X 8'



300 pale grey #3229



700 beige #3229



775 chocolate #3229

MARKET SQUARE

100% JUTE. REVERSIBLE. INDIA



Woven using an over and under technique that creates a high-low texture, Market Square has a multi-dimensional look that is as attractive as it is durable. Eco-friendly jute fibers in multiple yarn sizes add to the appeal.

3' X 5' 7' X 9'
5' X 8' 8' X 11'



650 khaki #6507



650 khaki #6507



300 grey #6507



200 teal #6507



850 terra cotta #6507



725 chocolate #6507



350 black #6507



**SOME THINGS
(like our simple wool solids)
NEVER GO OUT OF STYLE.**

MONTAUK 100% WOOL. INDIA



Montauk is our get-down-to-business basic. Modeled after sisal looks, it's handcrafted from pure, durable wool in seven natural colors. This best-seller is backed with heavy canvas for extra stability and is available in custom sizes.

3' X 5' 8' X 11'
 5' X 8' 9' X 12'
 7' X 9' 2'3" X 8' RUNNER



650 natural #9531



700 dune #9531



100 honey #9531



200 aloe #9531



150 gold #9531



725 mocha #9531



775 chocolate #9531

MOOR

100% WOOL. REVERSIBLE. INDIA

GENEVIEVE GORDER



"I must've lived many past lives in the Middle East as it's one of the most inspiring places on earth to me. The curves and intersections of pattern are dizzying and romantic." – Genevieve Gorder

3' X 5' 7' X 9'
5' X 8' 8' X 11'



350 pigeon #3628



725 stone #3628



875 saffron #3628

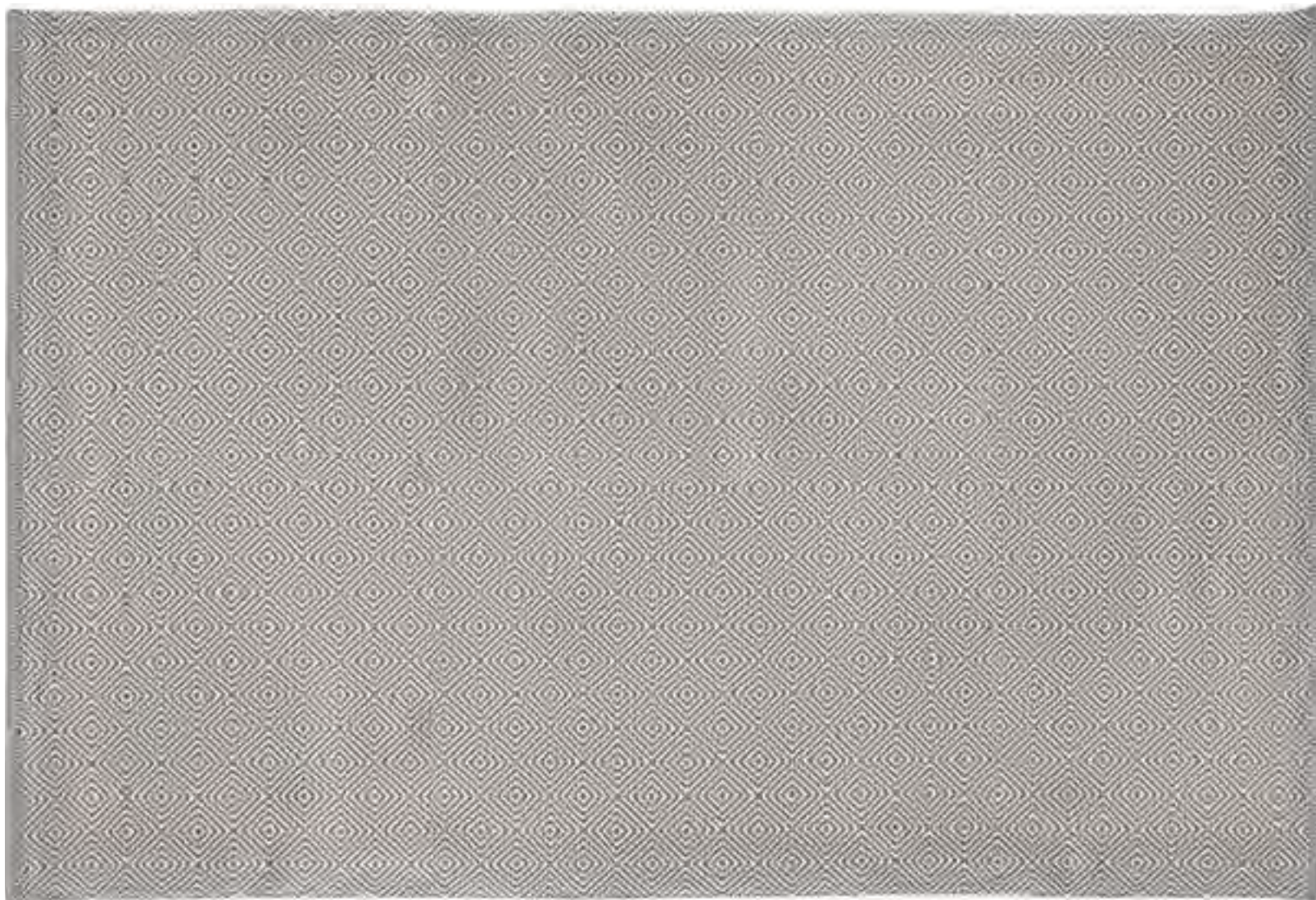
NAPLES

50% WOOL, 50% COTTON. REVERSIBLE. INDIA



Durable, lightweight and delightful in an interlocking diamond pattern, Naples is available in a flexible palette that's perfect for layering. A mix of space-dyed cotton and wool yarns creates soft, tonal texture.

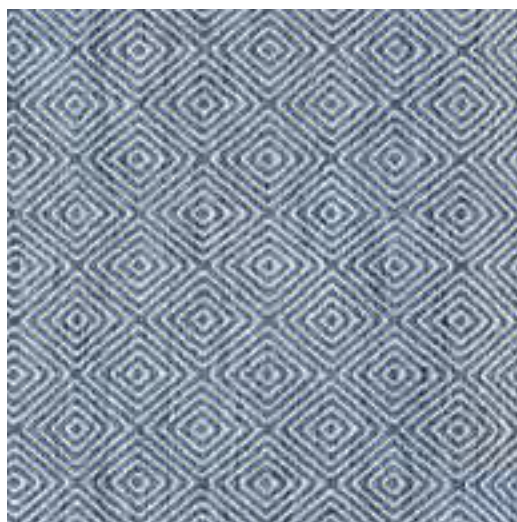
3' X 5' 7' X 9'
5' X 8' 8' X 11'



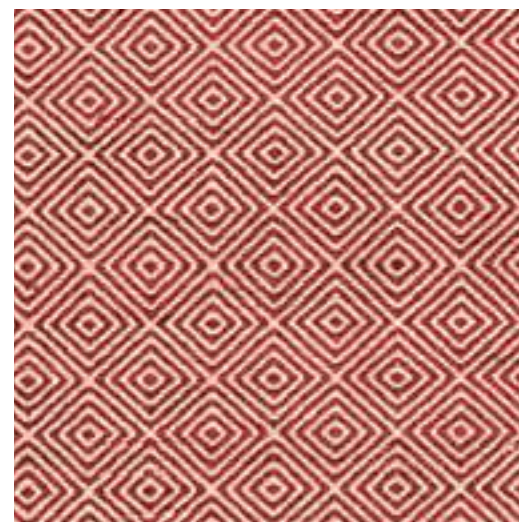
300 grey #3646



950 multi #3646



425 blue #3646



550 red #3646

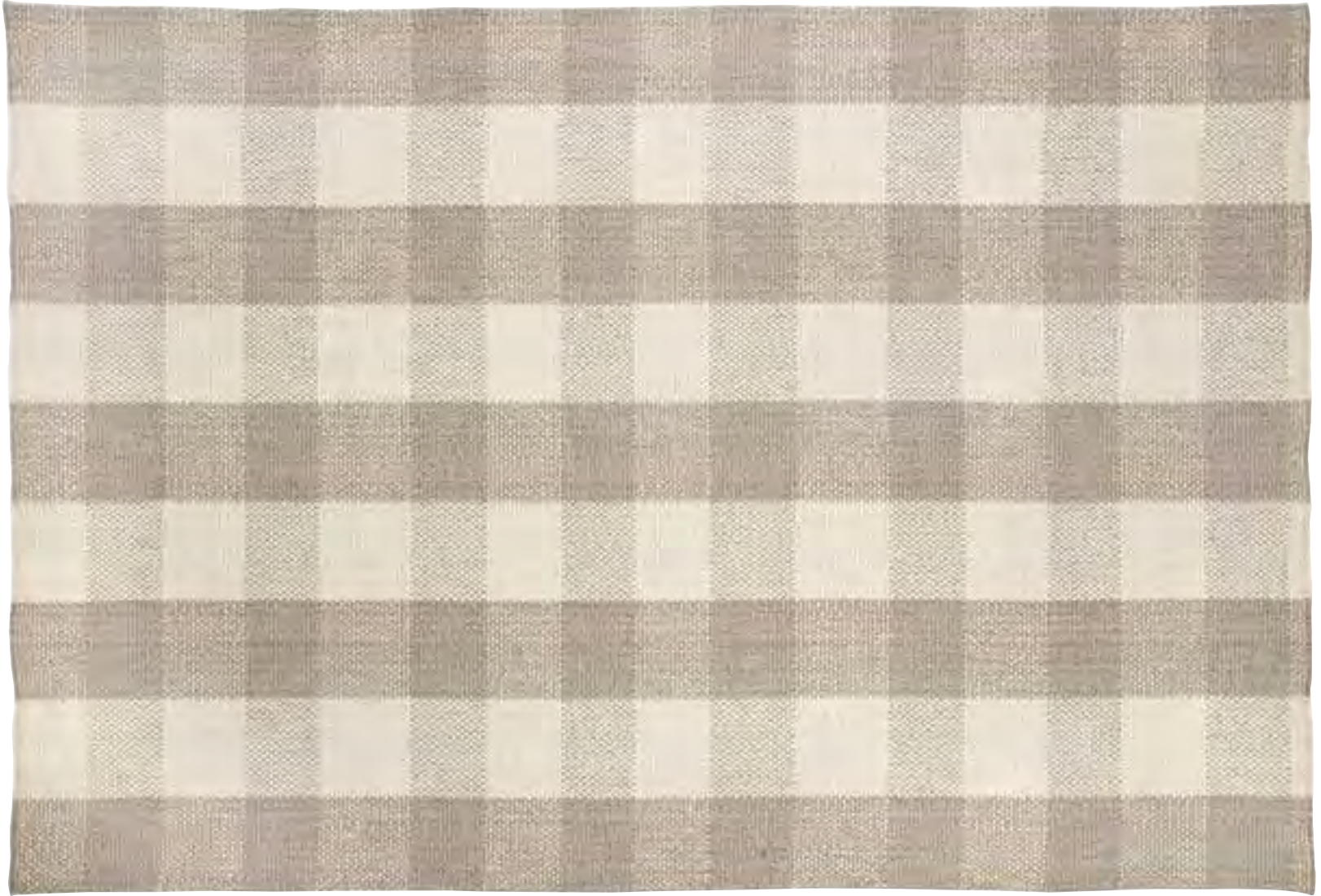
NOTTINGHAM

34% WOOL, 33% NYLON, 33% POLYESTER. REVERSIBLE. USA

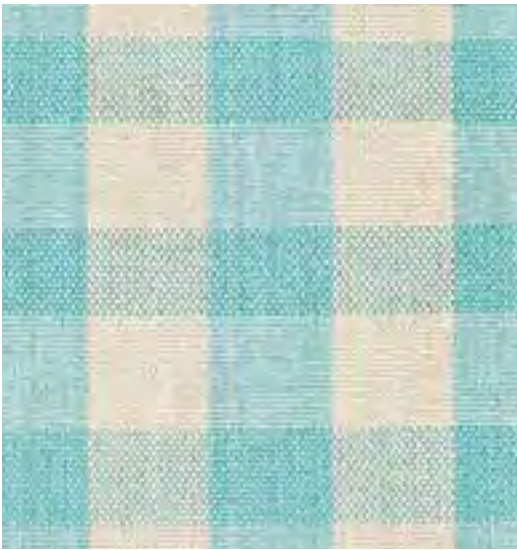


Nothing says easy style more than a crisp, bold gingham pattern. Popular because of its classic American roots, our Nottingham collection is available in current, yet classic color selections that make them easy to work with.

5' X 8'
7' X 9'
8' X 11'



310 grey #0403



420 turquoise #0403



500 red #0403



375 black #0403





Abstract medallions characterize this striking collection from designer Kevin O'Brien. Both graphic and organic, this low-pile look is smooth and inviting in your room.

3' X 5'
5' X 8'

7' X 9'
8' X 11'



600 cream #3666



200 mint #3666



140 amarillo #3666



444 azul #3666



TEXTURE DETAIL



475 blue/brown #3666



300 grey #3666

TANJIB

95% WOOL, 5% SILK. INDIA

Williamsburg



A silk embroidered design of circles and diamonds echoes pierced screens popular in Indian architecture. This motif is often used as a pattern on its intricate Indian chintzes.

3' X 5' 7' X 9'
5' X 8' 8' X 11'



650 hemp #3665



400 lavender #3665



450 ink #3665

UZBEK

100% WOOL. REVERSIBLE. INDIA GENEVIEVE GORDER

\$\$\$

“The indigenous patterns from the East—contagious, folksy and powerful. This rug plays with what’s familiar and pushes its patterning to the next level. I love the juxtaposition of the familiar and the unknown.” - Genevieve Gorder

3' X 5' 7' X 9'
5' X 8' 8' X 11'



450 bokrum blue #3625



700 stone #3625



PICTURED TOP TO BOTTOM / WORTHINGTON 700 jute #0209, WORTHINGTON 100 coir #0209, WORTHINGTON 300 cool grey #0209, WORTHINGTON 600 lambswool #0209

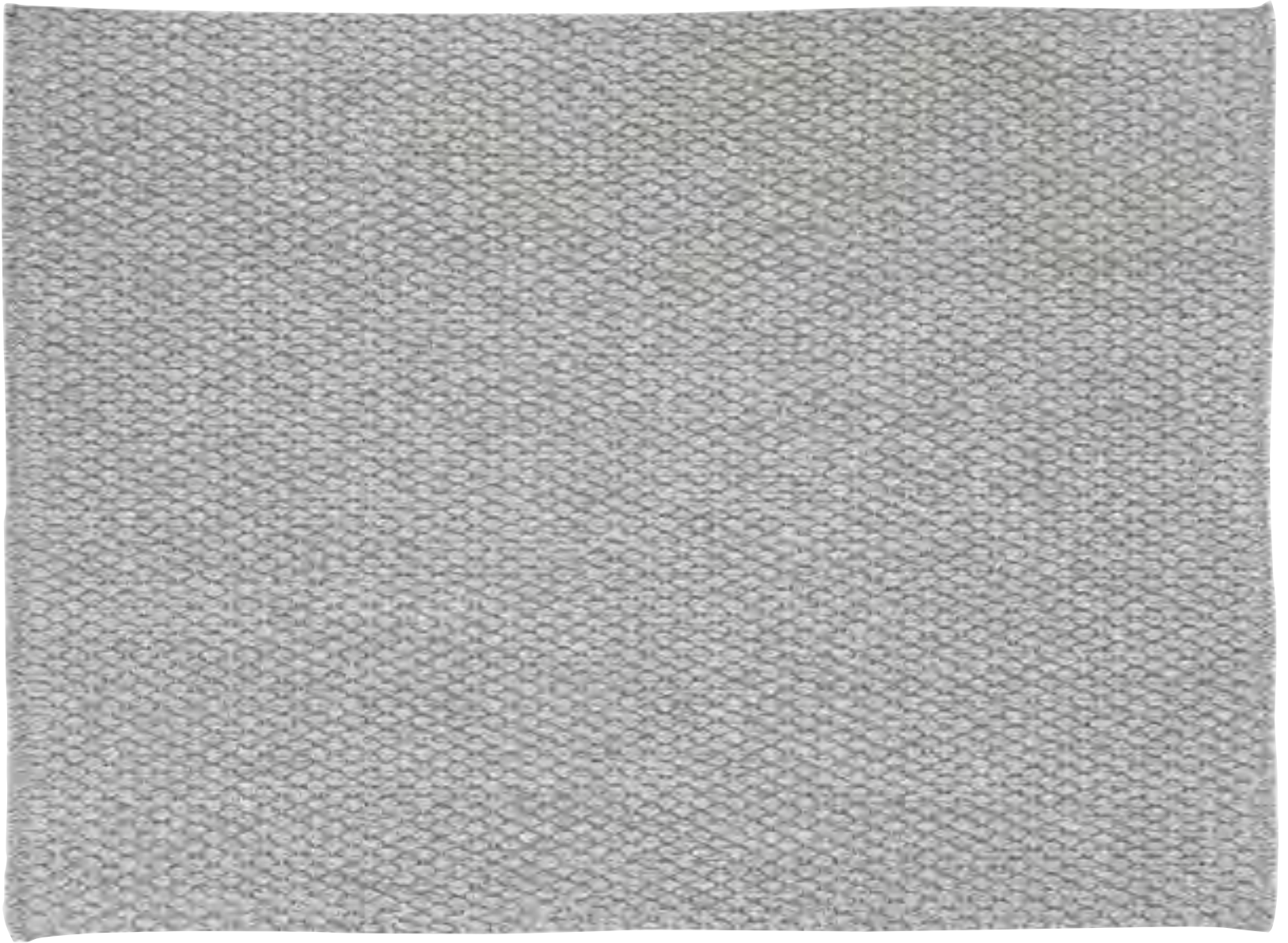
WORTHINGTON

34% WOOL, 33% NYLON, 33% POLYESTER. REVERSIBLE. USA



These thick and textural handwoven rugs have a durability that stands up to high traffic, and the wool blend is naturally hypo-allergenic. The bouclé texture looks and performs great installed on stairs while holding in the warmth from your home.

2' X 3' 7' X 9'
 3' X 5' 8' X 11'
 5' X 8' 2' X 8' RUNNER



300 cool grey #0209



600 lambswool #0209



700 jute #0209



100 coir #0209

